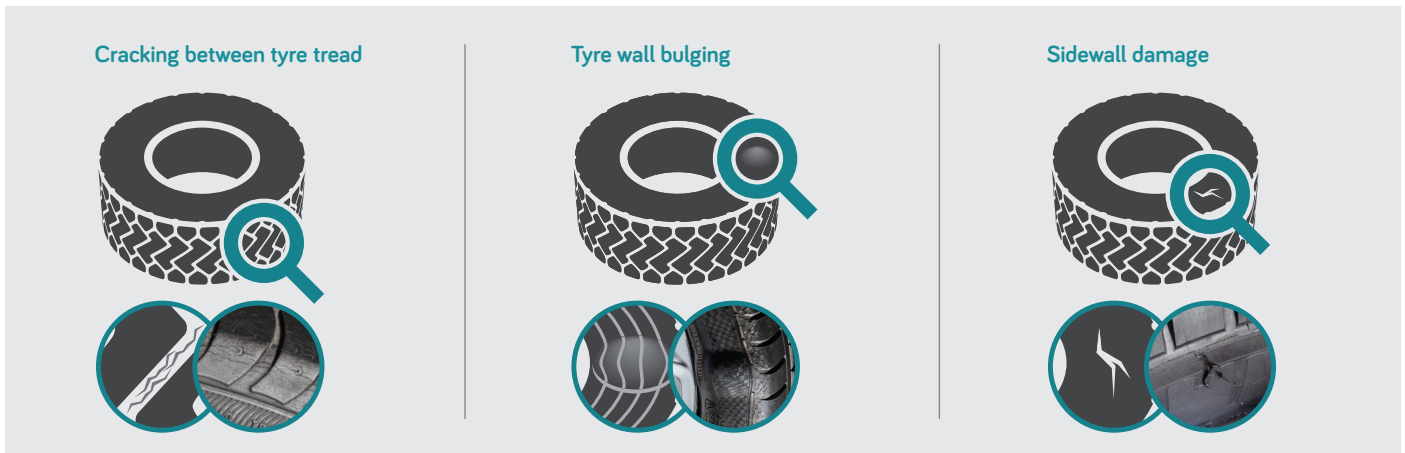




## Facts & figures on service life

Tyres are not food and therefore do not have a “best before date”. The service conditions the tyre has been subjected to will affect the service life, such as load, speed, inflation pressure, road hazards and damage. The serviceability of a tyre over time is a function of how the tyre has been stored, for instance temperature, humidity and position.



A tyre's service life is affected by the conditions in which it has been used. Since these conditions vary widely, accurately predicting the service life of a tyre at manufacture is not possible. Although, the older a tyre, the greater the chance it will need to be replaced due to service-related conditions, or just through wear.

Tyre dealers and drivers both have a huge part to play in ensuring that tyres perform safely. There are plenty of ways to positively influence tyre life and to check that they remain safely usable.

Tyres should be removed from vehicles if the tread level is worn to the minimum depth according to legislation. They should also be removed if there are signs of cuts, cracks, bulging or sun damage; or if there are signs of abuse, such as under-inflation or overloading.

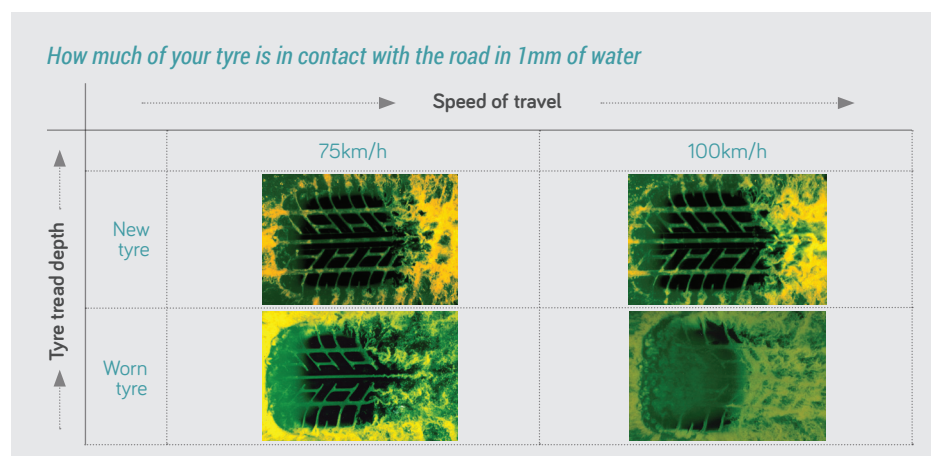
Because tyres face so much use, it is recommended to have all tyres (including spares) fitted to cars, motorcycles, light trucks, caravans, trucks, trailers and tractors inspected regularly. The industry emphasises the user's role in care and maintenance. A properly maintained tyre is a long lasting tyre.

It is industry's recommendation that consumers inspect tyres on a monthly basis - checking for inflation pressure and tread wear as well as implementing recurring rotation, balancing and alignment. Consumers should also use their hands and eyes to look out for signs that a tyre may need replacing.

These recommendations and guidelines cannot ensure that a tyre does not exhibit an undetectable internal condition that may render them unacceptable for continued service.

Drivers should also be aware of increased noise or vibration - both possible indications that a tyre may need replacing, or of mechanical wear that can cause tyre problems.

Vehicle and tyre manufacturers work together to create products that have a good and safe service life, with increasingly complex technology being built in. For both the vehicle and its tyres to perform efficiently over a long service life, maintenance is essential.



learn more by visiting:

[www.tyreaware.org/service-life](http://www.tyreaware.org/service-life)